

WebcamTweaker and Quartz Composer

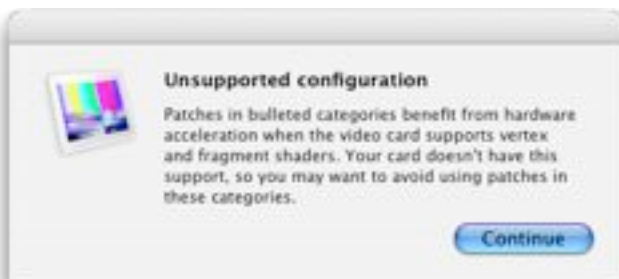
WebcamTweaker special effects have been built with Quartz Composer. It is therefore possible for everyone to develop personal effects using a simple interactive environment.

Following this guide, you will find the complete procedure needed to create a new sample effect. Each step is explained in detail.

Step 1.

Start Quartz Composer. The application is bundled with the Apple Mac OS X 10.4 Tiger, but it is installed only with the developer tools in the folder “/Developer/Applications/Graphics Tools”.

If the Mac you are working with has a video card that does not support the hardware accelerated CoreImage, you will get the following message. Just ignore it.



Step 2.

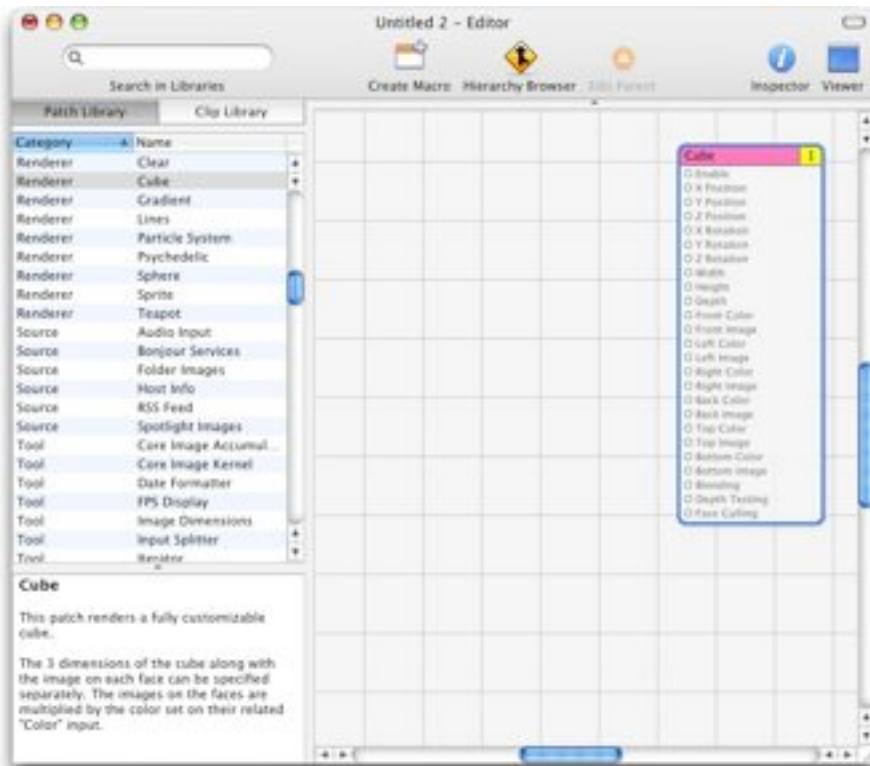
When Quartz Composer starts up, the Quartz Composer Assistant pane appears.



Select Cancel, then File → New to create a new composition.

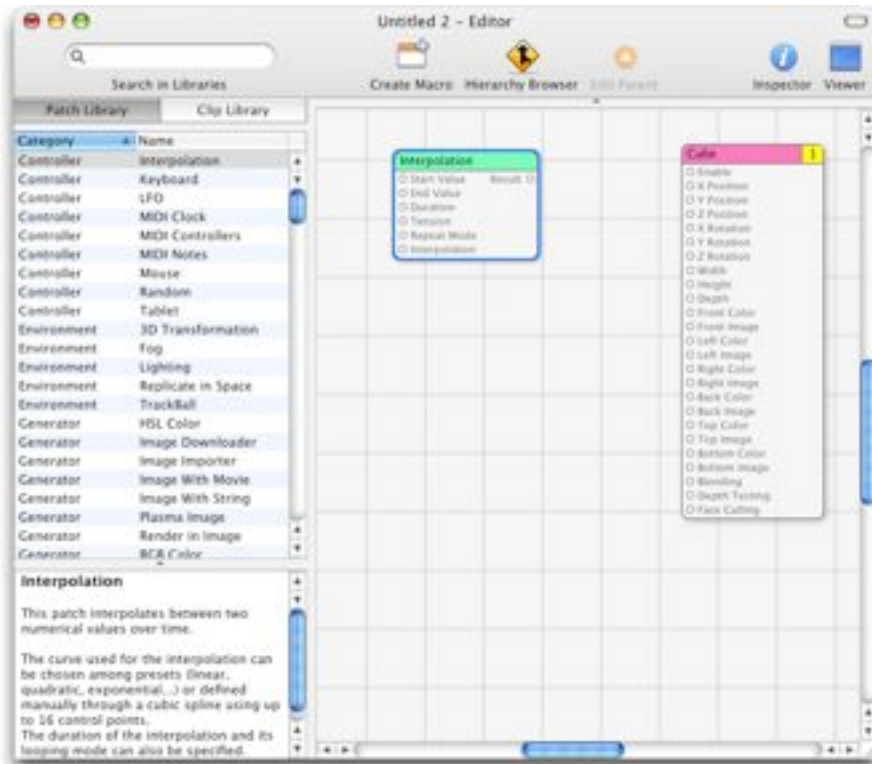
Step 3.

Drag the Renderer Cube from the Patch Library to the new composition.



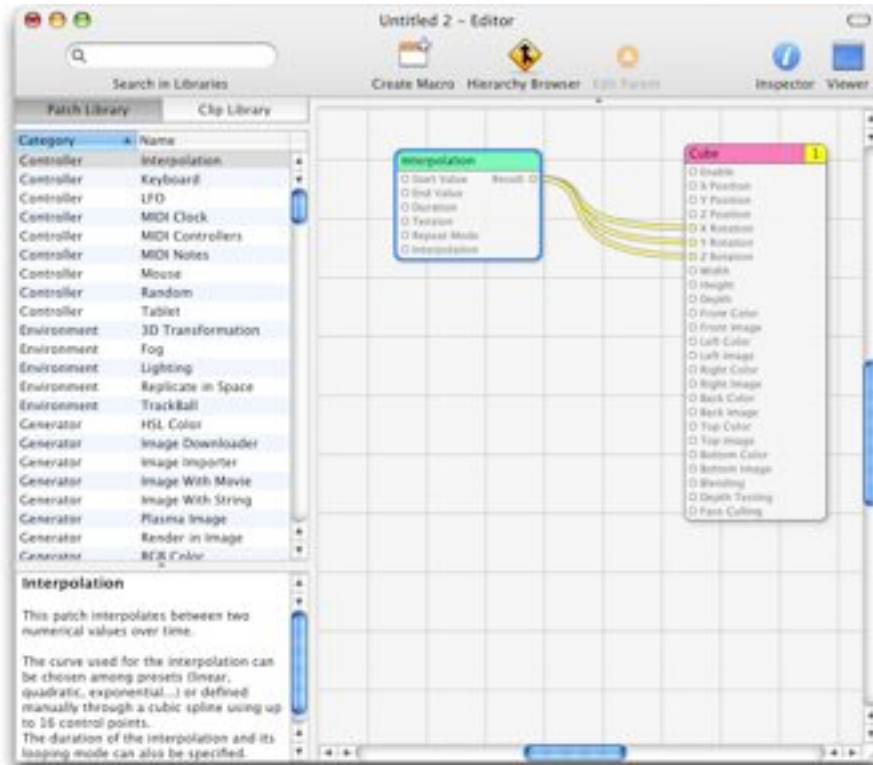
Step 4.

Add Controller Interpolation from the Patch Library:



Step 5.

Connect the Interpolation Result with the Cube X, Y, Z Rotation by dragging the Result dot onto the Rotation dot.



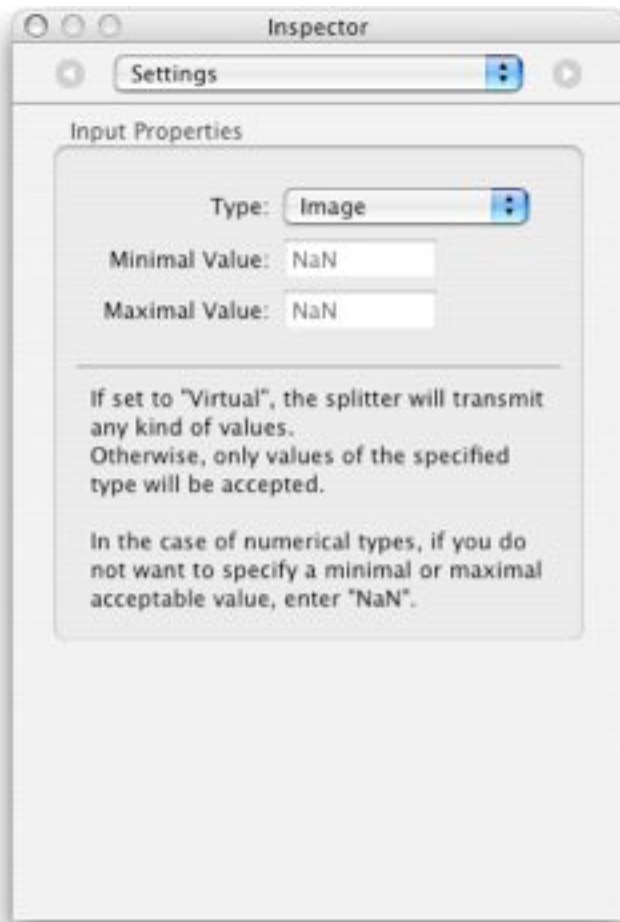
Step 6.

Select Interpolation and open the Inspector Command-I. Select Input Parameters and set the following values:



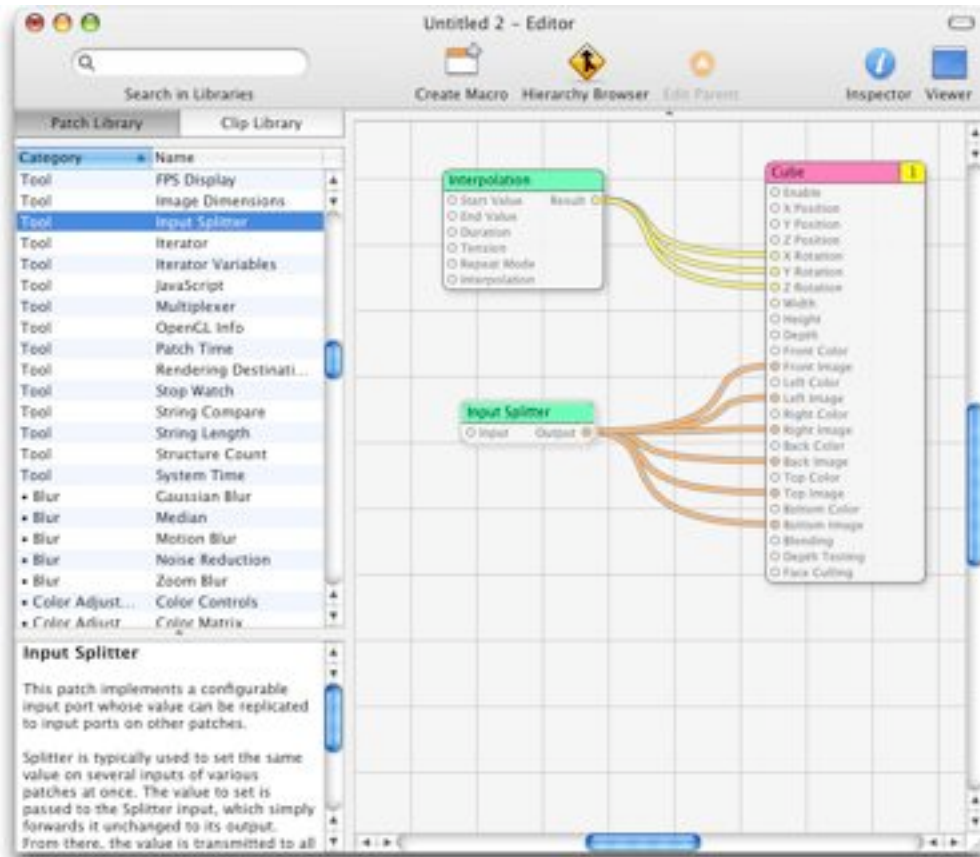
Step 7.

Insert the Input Splitter patch and using the Inspector set the Type parameter of the Input Splitter to Image



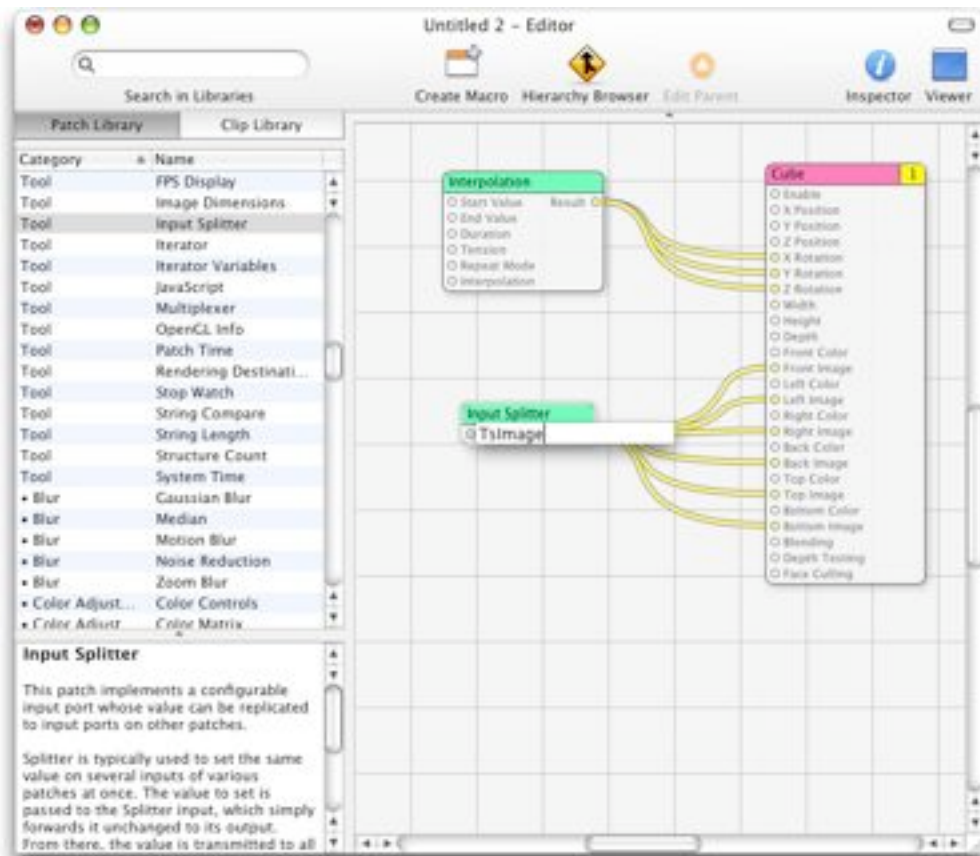
Step 8.

Connect its output to Front, Left, Right, Top, Bottom, Back Image



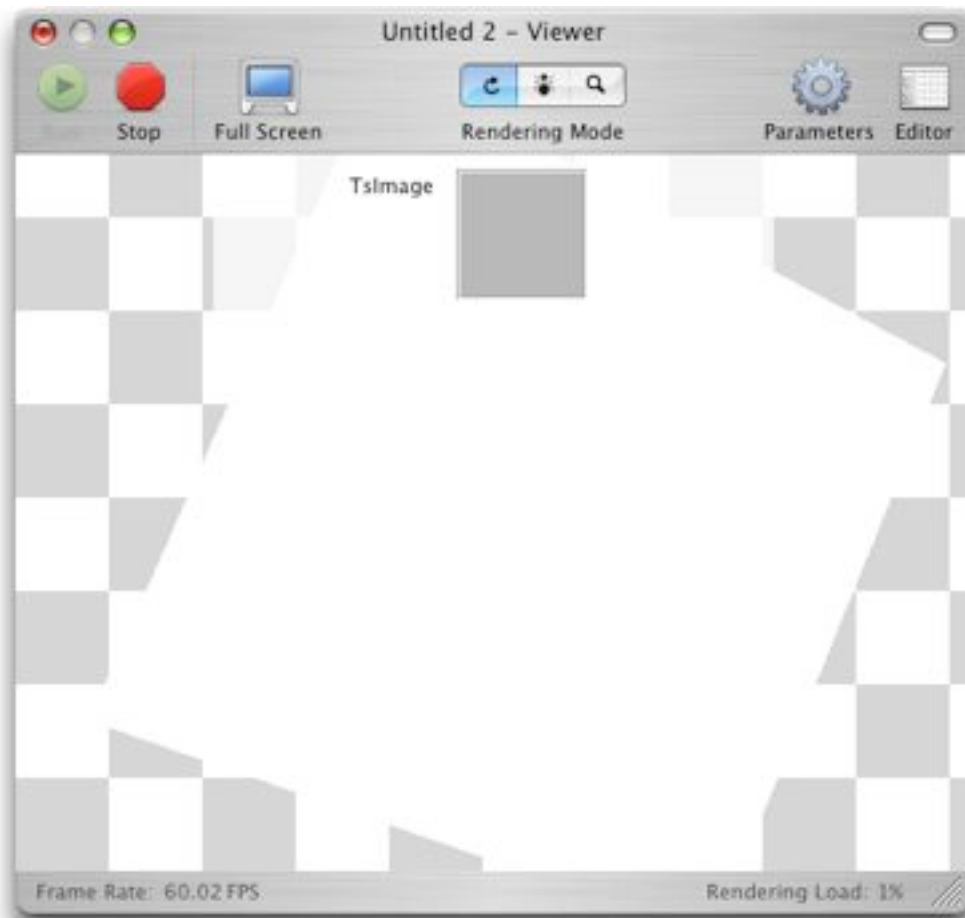
Step 9.

Control Click Input on the Input Splitter and set Published Input to TImage



Step 10.

In the viewer window select Parameters from the toolbar (Command-T)



Step 11.

Select an image by clicking on Tslmage. This image will be replaced by the image coming from the webcam in WebcamTweaker



The new effect is now complete. Save it in a new folder in “/Library/Application Support/WebcamTweaker/Filters”, for example “/Library/Application Support/WebcamTweaker/Filters/MyFilters/Cube.qtz”.

Start WebcamTweaker again to make the new effect available.

For any further information, please refer to the [Quartz Composer programming Guide](#).